



TM

Be®

Be|OS | BE
OPERATING
SYSTEM

For X86 and PowerPC™

RELEASE

4.5



Be[®]

Be|OS

BE
OPERATING
SYSTEM

RELEASE

4.5

I didn't know a PC could do that!

Give your desktop computer the speed and stamina of a high-end media workstation. Image editing, animation, 3D graphics, digital audio and streaming video, terabyte-size files—BeOS easily handles them all simultaneously, with virtually no wait. And BeOS can run alongside your current operating system.

pure adrenaline

Quick Look

- Runs multiple, high-bandwidth applications simultaneously, at full speed, on low-cost Intel and PowerPC hardware
- Lightning-fast booting and application loading
- Real-time image and sound manipulation
- All system operations accessible at all times
- Runs alongside Windows®, Mac OS®, Linux, and others
- Familiar, intuitive, fun-to-use interface
- Rock-solid stability
- No rebooting! If one application crashes, reload it and go!
- Handles terabyte-size files and disks
- Built-in Internet protocol communications
- Simple installation! Ten minutes from box to Internet
- Includes partitioning software and a boot manager—there's nothing else to buy
- Comes with browser, email, media player, development environment, and more

Pure adrenaline for your PC. Designed from the ground up to handle high-bandwidth digital media, BeOS delivers unprecedented speed and power on Intel-based computers. It's the only operating system that allows your applications to take full advantage of one to eight processors. That means you can boost performance by nearly 100% just by adding a second processor. And BeOS's 64-bit file system lets you store years of uncompressed video (instead of the standard five minutes with 32-bit systems) in a single file!

Immediate response. No waiting. Launch applications, run multiple streaming audio and video files, print, access menus, switch windows, go online. With BeOS, all operations are accessible all the time. There's no waiting for commands to finish executing. BeOS boots in less than 20 seconds; applications load faster than you thought possible.

No tedious rebooting. With BeOS, each application runs in its own protected memory space. So if one crashes, the system and other applications don't even flinch. You're able to continue working uninterrupted while the crashed application reloads. Need to install a new driver or tool? Do it without rebooting. You can even add hardware on the fly!

At one with the Internet. Built with TCP/IP as its native communication protocol, BeOS interoperates flawlessly with the Internet right out of the gate. Email and web browsing services are built in (but not locked in). Any BeOS system is able to serve up web pages right from the start.

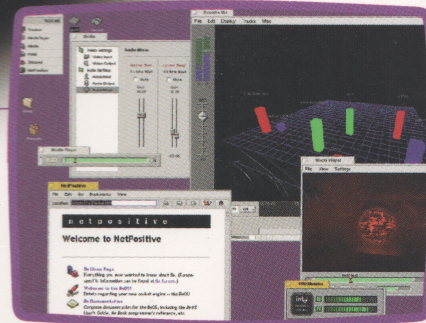
Fits alongside Windows®, Mac OS®, and Linux. Install BeOS right alongside Windows, Linux, UNIX, or Mac OS. At startup, just choose which system to load. It's that simple. You can even read and copy data from files created in other operating systems to BeOS.

Rock right out of the box. Ten minutes after you open this box, you can have BeOS installed and easily configured. Boot up, and you'll find recognizable folders, windows, pulldown menus, and dialog boxes. The interface is so familiar, there's almost no learning curve.

Hundreds of applications available. BeOS comes complete with a web browser, email client, media player, sample 3D audio mixer, integrated development environment with source-level debugger, utilities, translators, and application demos.

In addition, you can choose from more than 800 powerful applications currently available for BeOS, including:

- Audio □ Video □ Graphics □ Office
- Productivity □ Internet & Networking
- Development Tools □ Utilities □ Games
- and more



Professional timing services and instant response make BeOS perfect for live digital media editing. No glitches, slowdowns, or dropped frames. With BeOS, you can have several applications running at once with virtually no delays!

What's it like to use BeOS? Read what the reviewers are saying:

"I'm doing all of my word processing, spreadsheet, email and Internet tasks in BeOS...while playing multiple simultaneous MP3 files...extracting web sites out of Be's database, flying around between tasks." —PC Magazine

"Imagine an operating system that combines some of the better qualities of Linux, the Mac OS, and Windows, and you'll have an idea of the huge potential of BeOS." —Information Week



Be Inc. 800 El Camino Real, Suite 400, Menlo Park, California 94025, USA

Be Europe Immeuble Le Linéa, Rue du Général Leclerc 92047 Paris La Défense Cedex, France

Includes

Kodak
digital science
Color Management Software



New applications are released weekly.
For a complete list—and to download shareware, freeware, and demos for BeOS—visit www.be.com.





Be

BeOS Capable Systems

- ☐ Intel®: Pentium®, II, II Xeon, III, III Xeon, Celeron™; AMD: K6®, K6®-2, K6®-III; Cyrix M II™, 6x86MX™; IDT: WinChip C6™, 2 *
- ☐ Many PowerPC™ 85/8600, 9500/9600 PCI-based compatible computers (and G3 upgrade cards for those computers) *
- ☐ Supported chipsets: 430HX/VX/FX/TX, 440 FX/LX/BX, 405KX/GX/NX, Via MVP3, SiS 5597/8, Aladdin 5

Minimum System

- ☐ 32 MB of RAM
- ☐ 150 MB of disk space
- ☐ CD-ROM

Other Information

- ☐ Video: BT-848 based video capture devices (Hauppauge, Intel, ADS, etc.)
- ☐ Digital Cameras: Nikon Coolpix 900, Polaroid Photomax PDC-640, Olympus D-320L, D-340L, Camedia C-340L, C-400, C-840L
- ☐ Networking: Support for DEC 21040/41/43, 3-Com 3c905, 905b, NE2000, and Intel EtherExpress (PCI), PCMCIA (NE2000). External/internal modems (but not Winmodems).
- ☐ Graphics: Matrox Mystique, Millennium I/II, G-100, G200, ATI 3DRage (II, Pro, Pro Turbo, LT Pro), Voodoo III, Banshee, Intel i740, Riva 128, Riva TNT, NeoMagic 128, 128XD, 256AV, S3 Virge, Virge DX, Virge GX. IMS Twin Turbo, on-board PowerMac™ graphics.
- ☐ Sound: SoundBlaster AWE, SoundBlaster PCI (16, 32, 64, and 128), E-mu APS, Ensoniq AudioPCI, Turtle Beach Daytona, IOMagic MagicSound PCI. Supported chip sets: ES1370/1/3, ESS1938, CS4235/6/7, OPTi 931, YMF 715, SonicVibes, Emu10k1.
- ☐ SCSI: Adaptec (2940, 2940-W, 3940, etc.), BusLogic BT-948/958/985-D, Symbios 53c8xx (Tekram 390F, Diamond Fireport 20, 40)
- ☐ IDE: IDE/EIDE/ATAPI. UltraDMA 33/66. Removable devices.
- ☐ Partitioning software and boot manager included.

Box Content

- ☐ BeOS CD ROM
- ☐ BeOS floppy disk for Intel Pentium®
- ☐ User's Guide
- ☐ Installation Guide

* For a complete list of BeOS compatible systems and peripherals, visit <http://www.be.com>



TM

Be[®]

Be|OS

BE
OPERATING
SYSTEM

RELEASE

4.5



For technical support, registration and information,
visit our web site: <http://www.be.com>

Be, BeOS and the Be and BeOS logos are registered trademarks. Power Macintosh is a trademark of Apple Computer, Inc. Intel and Pentium are registered trademarks of Intel. All other trademarks belong to their respective owners.

1999 Be Incorporated. All rights reserved. Printed in the USA.

